

# Dorchester County, SC 2010 Average Annualized Daily Traffic Counts

- Traffic Station
- Road Classification
  - Interstate
  - US Highway
  - SC Highway
  - Major Road
  - Minor Road
- Dorchester County
- Other County

## How To Interpret The Station Counts

Station Number -  
Counting Device's ID  
Traffic Count -  
Number of Vehicles

**Example:**  
2179 -  
Station Number  
38900 -  
38,900 Vehicles Daily

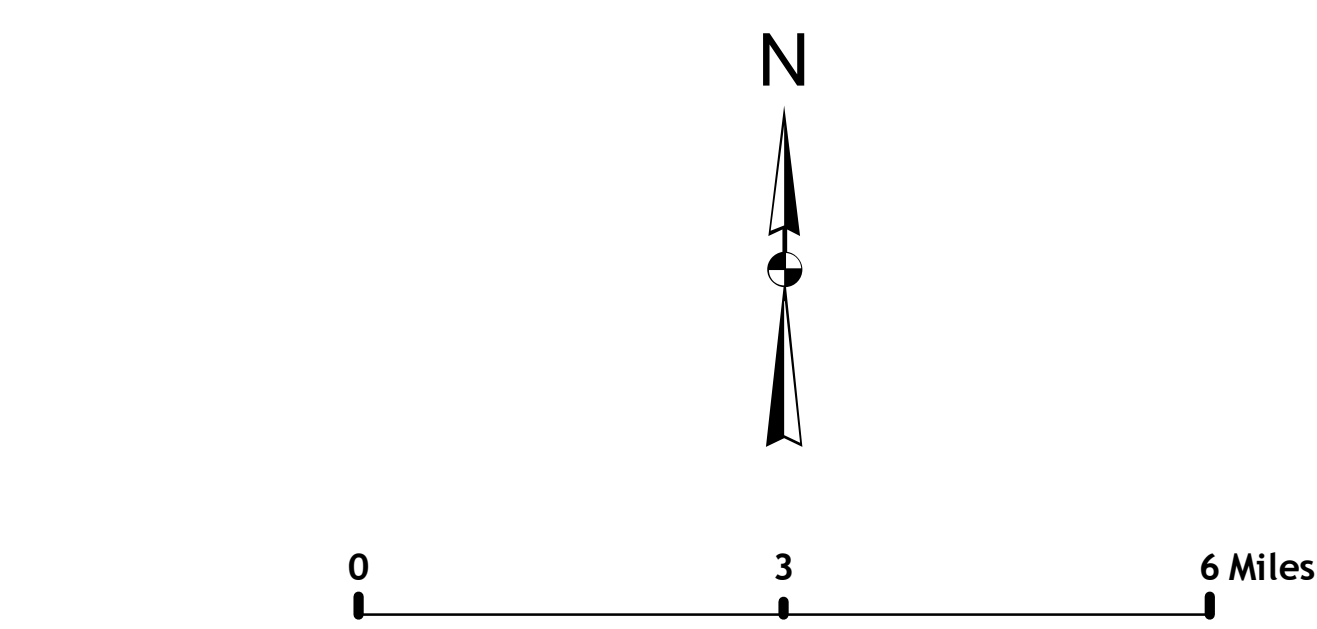
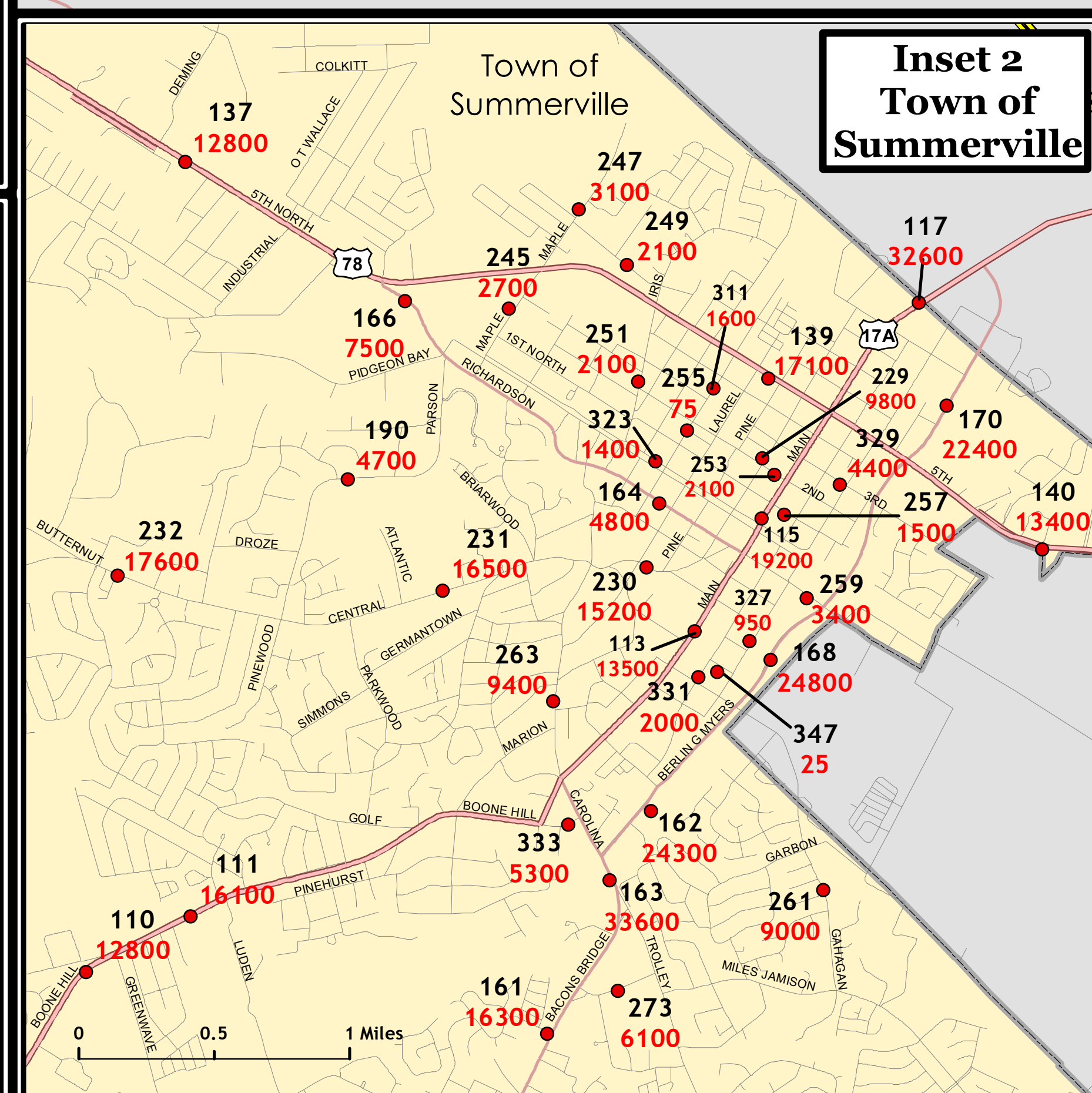
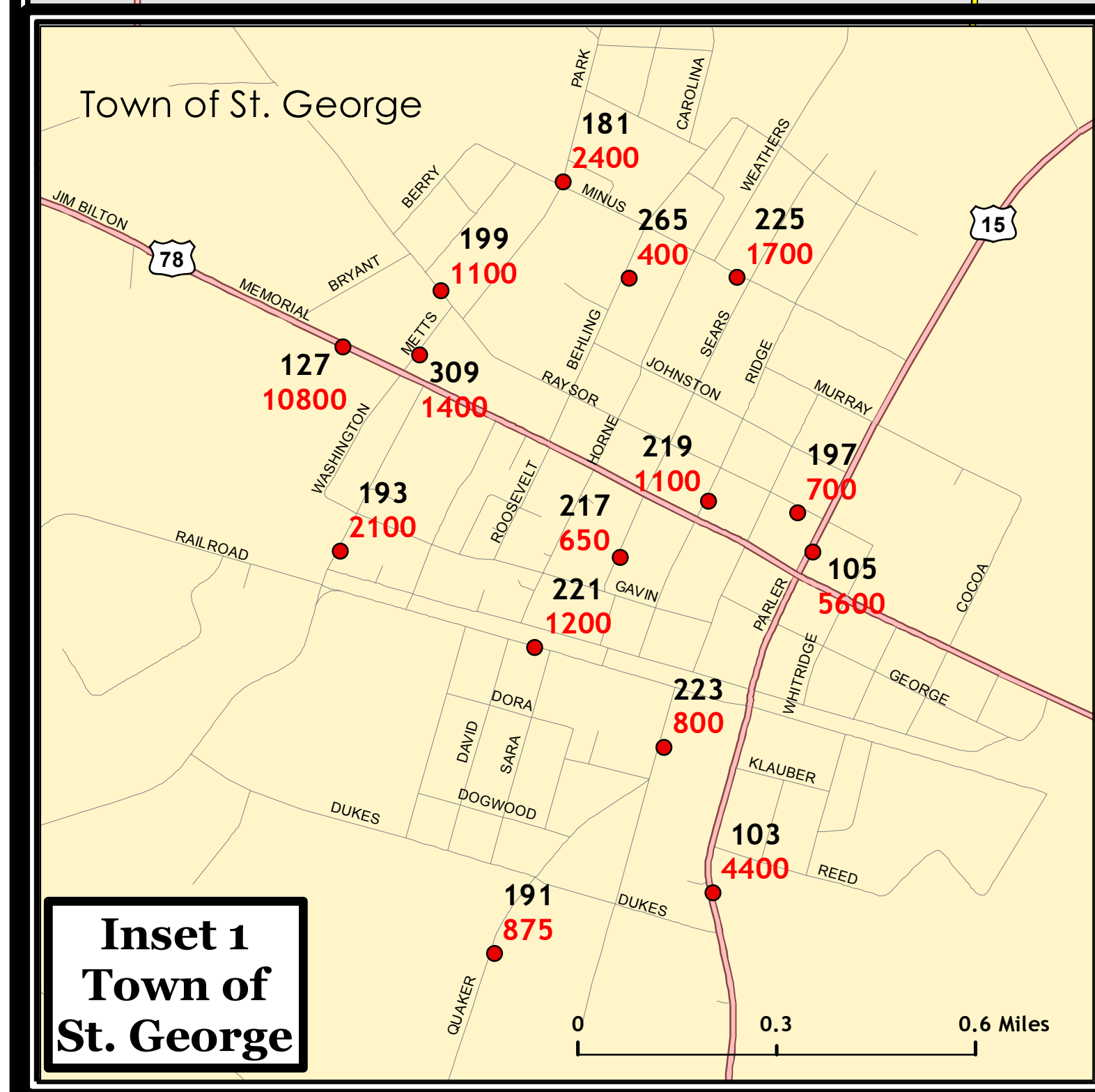
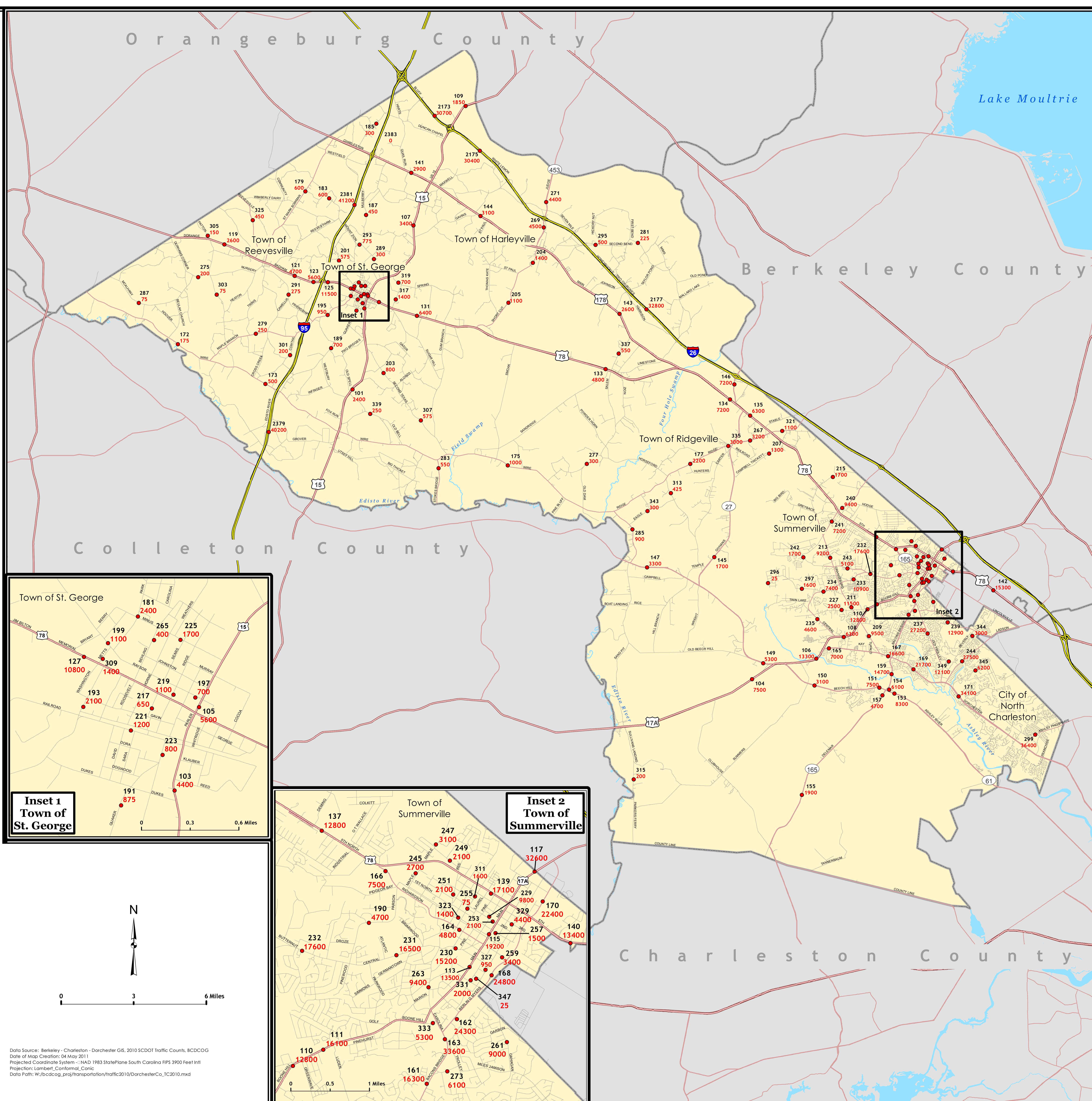


**BCDC** BERKELEY-CHARLESTON-DORCHESTER  
COUNCIL OF GOVERNMENTS  
1362 McMillan Avenue, Suite 100  
North Charleston, South Carolina 29405  
(843) 529-0400 Fax: (843) 529-0305

The purpose of the Traffic Count Program in South Carolina is to provide traffic characteristics and related data for all the State's roadways. The Program's main objective is to provide estimated traffic counts for roads on the state system and any other locations that are presumed to carry a significant amount of traffic. Data obtained from the traffic counts aid in planning and designing highways, monitoring traffic trends, predicting future traffic volumes, creating statistical reports, and fulfilling the informational needs of the SCDOT, other state and federal agencies, private-sector businesses, and the public. All counts made by the traffic count section are made annually, with the exception of special counts, which are made as requested.

**BCD COG Disclaimer:** This map is a graphical representation of data obtained from various sources. All efforts have been made to warrant the accuracy of this map. However, the BCD Council of Governments disclaims all responsibility and liability for the use of this map.

**SC DOT Disclaimer:** The South Carolina Department of Transportation makes no representation or warranties implied or expressed, concerning the accuracy, completeness, or reliability for any particular purpose of the information and data contained herein.



Data Source: Berkeley - Charleston - Dorchester GIS, 2010 SCDOT Traffic Counts, BCDCOG  
Date of Map Creation: 04 May 2011  
Projected Coordinate System: NAD 1983 StatePlane South Carolina FIPS 3900 Feet Intl  
Projection: Lambert\_Conformal\_Conic  
Data Path: W:\bcdcog\_pra\transportation\traffic\2010\DorchesterCo\_1C2010.mxd