



# RETHINK FOLLY

## Segment 1 Update

*Ellis Creek to Prescott Street*



# CONTENTS

- Where We've Been
- Dominion Energy Overhead Power Lines
- Design Alternatives & Opportunities
- Cost Comparison
- Recommendation
- Budget Considerations



# WHERE WE'VE BEEN

Budget, Segmentation, Approved Alternative



Available Funding: \$2.675M

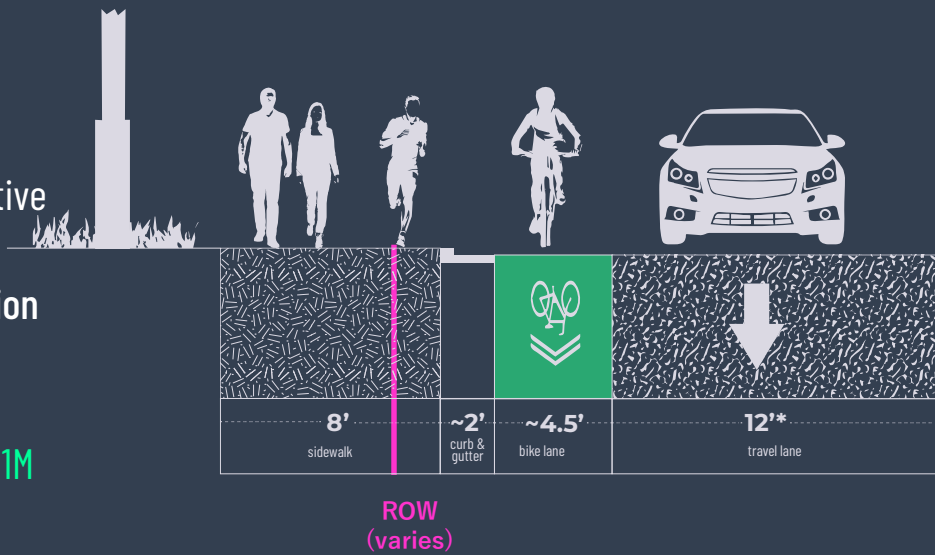


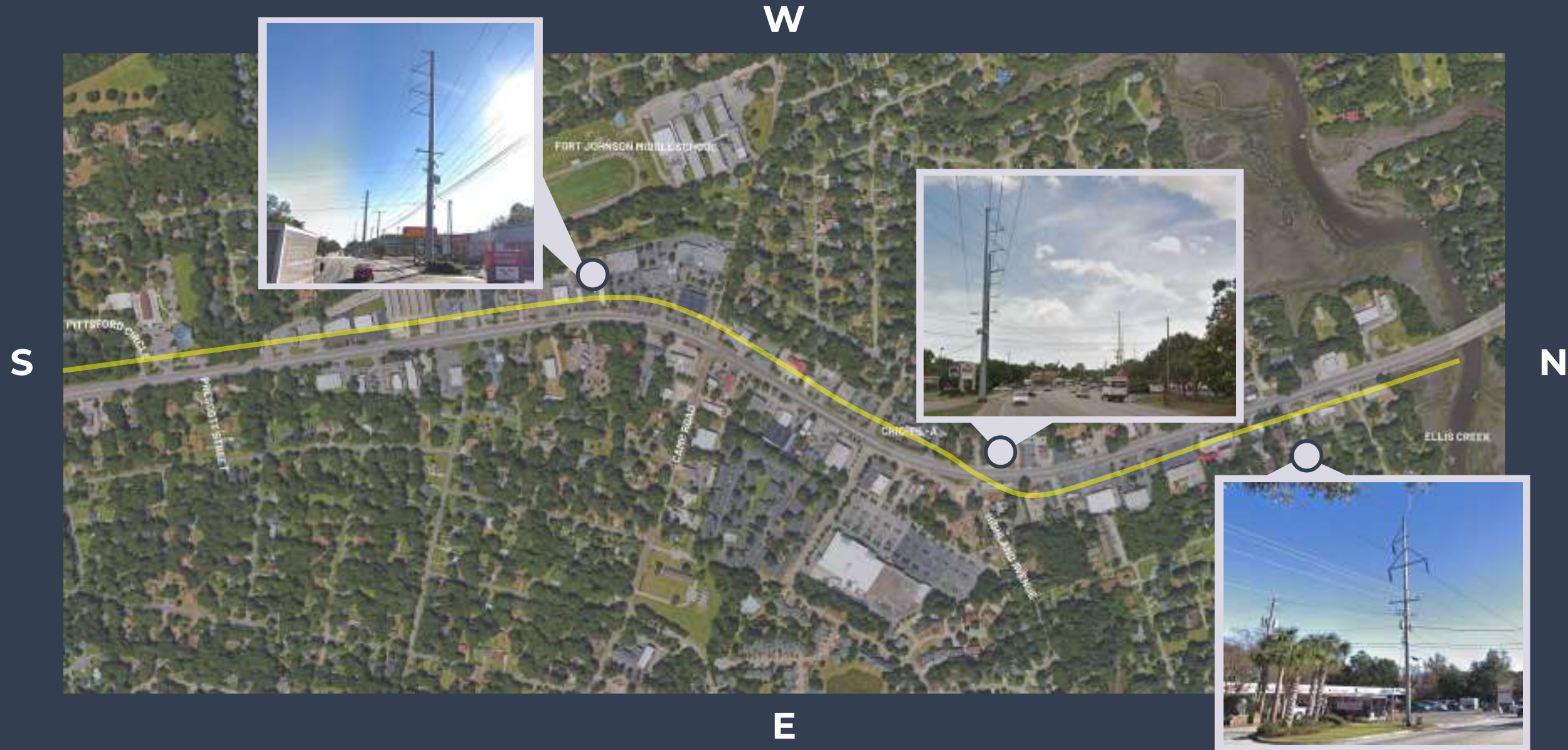
## REVISED RECOMMENDED ALTERNATIVE 2b

Segment 1 Approved Alternative

8' Sidewalk + Utility Relocation + *Future Bike Improv.*

2.1 M + *approx. \$400,000 - 1.1M bike improvements*





**W**



**S**

**N**



**E**



W



S

N



E



# WEST SIDE DESIGN ALTERNATIVES

*Dialysis Clinic / Lowdown*



# WEST SIDE DESIGN ALTERNATIVES

*Lowdown / CubeSmart*





# WEST SIDE DESIGN ALTERNATIVES

*Sumter's Landing*



# WEST SIDE VS. EAST SIDE DESIGN ALTERNATIVES

*Dialysis Clinic / Lowdown*



# WEST SIDE VS. EAST SIDE DESIGN ALTERNATIVES

*Lowdown / CubeSmart*



# WEST SIDE VS. EAST SIDE DESIGN ALTERNATIVES

*Sumter's Landing*



8' Sidewalk on West Side to  
Pittsford Circle  
19,393 SF ROW  
**\$ 2.25 M**



8' Sidewalk West Side North of Camp/Folly;  
8' Sidewalk East Side South of Camp/Folly  
to Prescott Street  
8,993 SF ROW  
**\$ 1.72 M**

# RECOMMENDATION

**PHASE 1:**  
8' Sidewalk East Side South of Camp/Folly to  
Wilton Street + Crossing at George Griffith

**PHASE 2:**  
8' Sidewalk West Side North of Camp/Folly

**\$2.2M**

**Future 12' Multi-Use  
Path; West Side**

Proposed Crossing

Existing 5' Sidewalk;  
West & East Side

**PHASE 2**  
8' Sidewalk; West Side

Existing Crossing

S

N

Existing 5'  
Sidewalk

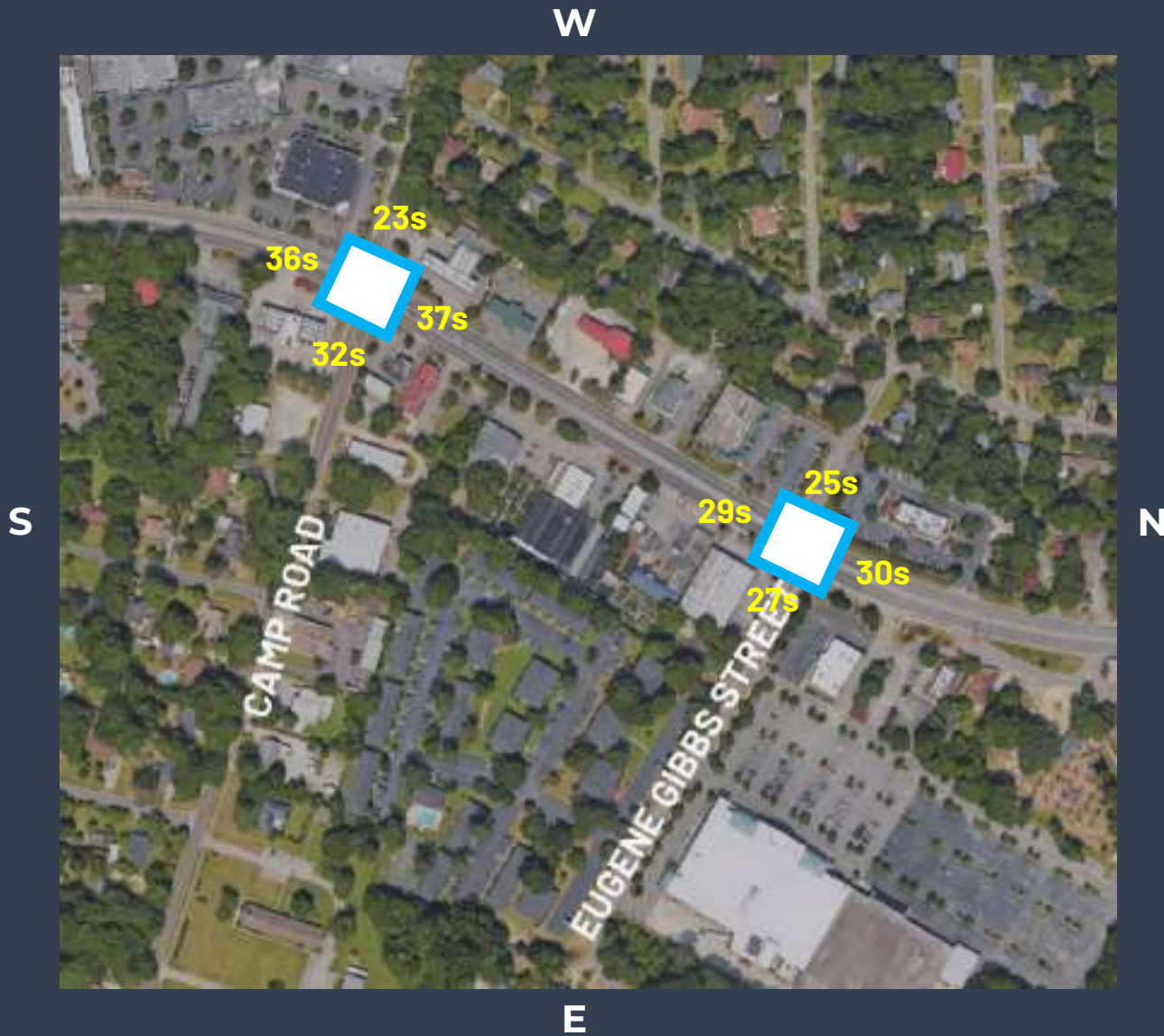
**PHASE 1**  
8' Sidewalk; East Side

Existing Crossing

E



# CROSSWALKS



- Protected pedestrian crossing phases incorporated into signal phasing plan
- Crossing times based on width of road, pedestrians traveling at 3mph



# RECOMMENDED ALTERNATIVE BENEFITS

- Improved safety
- Project budget extended
  - More funds available for wider green bike path
  - Completes Segments 1 & 2
  - Accelerates MUP & pedestrian crossing at George Griffith
- Restriping lanes creates opportunity for a speed study (potential lower speed limits)
- Less ROW impacts
- Less utility impacts
  - Avoids Dominion substation
- Adds facilities to East side which has less potential for redevelopment in the future
- More functional & aesthetically pleasing sidewalk



**FOLLY ROAD CAN BE MADE SAFER BY:**

- BUILDING CONTINUOUS SIDEWALKS, FREQUENT CROSSWALKS, AND PROTECTED BIKEWAYS
- USING SLOWER, SAFER "DESIGN SPEEDS"





# BUDGET CONSIDERATIONS



**\$ 400,000**  
City of Charleston



**\$ 400,000**  
Town of James Island



**\$ 1,500,000**  
BCDCOG



**\$ 375,000**  
Charleston County

**TOTAL AVAILABLE FUNDS**  
**\$ 2.675M**

## PROJECT CONSTRUCTION

City of Charleston + Town of James Island +  
BCDCOG + Charleston County

8' Sidewalk West Side North of Camp/Folly  
8' Sidewalk East Side South of Camp/Folly to  
Wilton Street + Crossing at George Griffith

**\$ 2.2M**

## GREEN BIKE FACILITIES

\$ 500,000 available

6' Green Bike Lanes on East & West Sides  
of Folly Road from Ellis Creek to George  
Griffith Boulevard

**\$ 400,000 – 1.1M**

## UNDERGROUND DISTRIBUTION

Town of James Island + Charleston County

Underground Distribution on West Side  
of Folly Road from Ellis Creek to  
Camp/Folly at Eugene Gibbs Street

**\$ 700,000 +**

\*Charleston County would contribute the value of relocating poles replaced by underground distribution